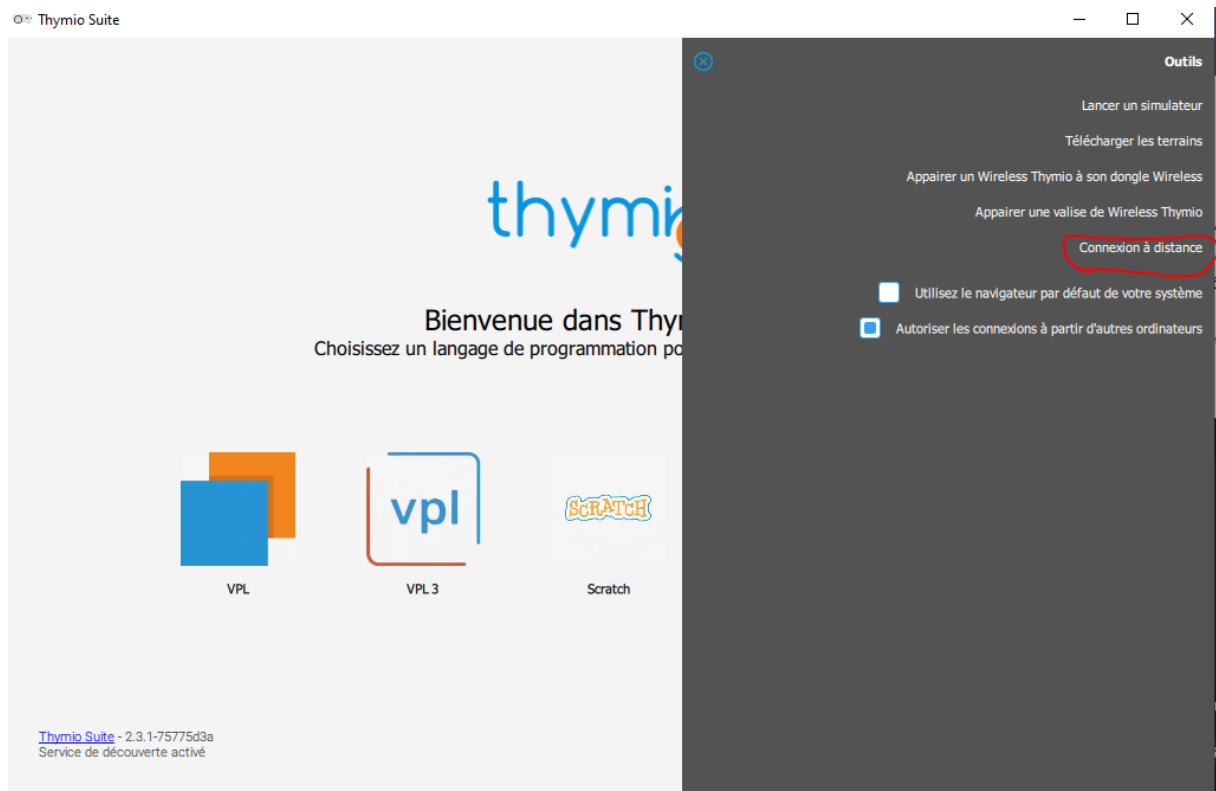


## How to give access to your robot



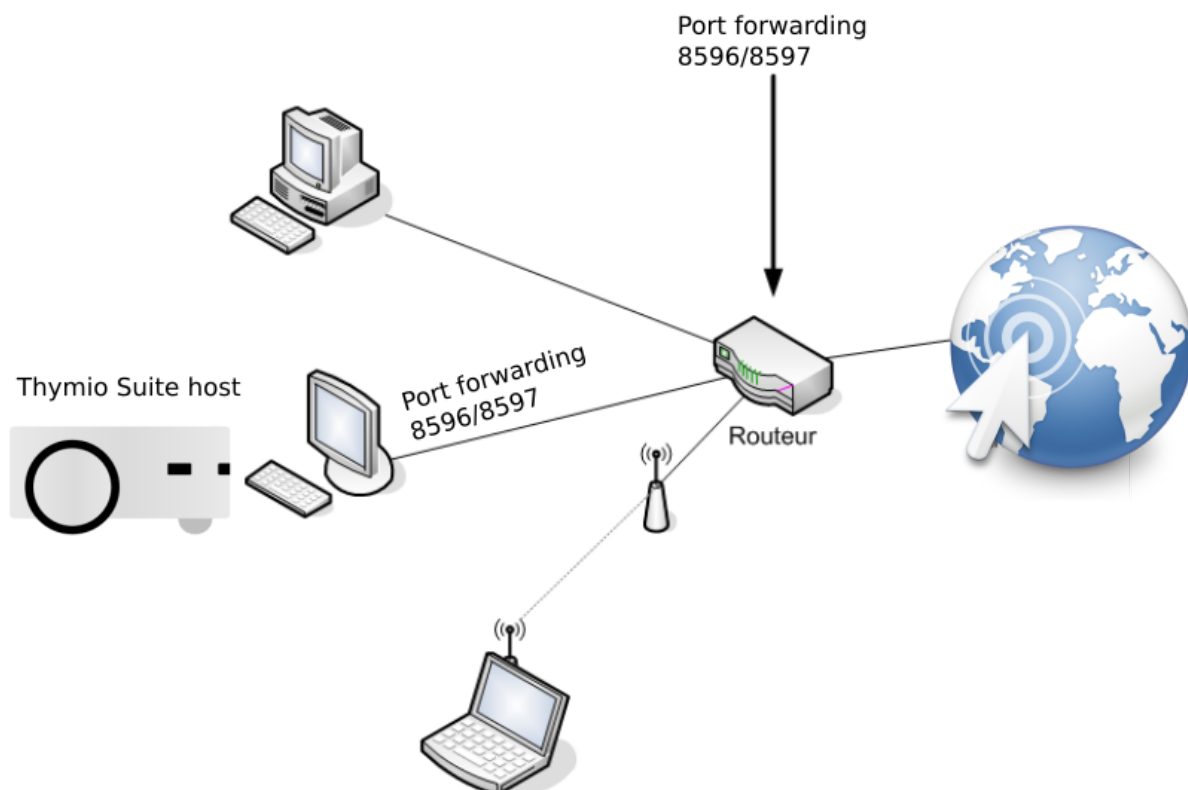
# Remote connection setup for a host

Providing access to external computer with Thymio Suite is quite easy for the external user, as they just need a IP address and a password, for the host computer it needs one additional step related to the ports.

With Thymio Suite the ports 8596 and 8597 are used for sharing the connection with the robots.

The host needs to ensure that these ports are accessible for participants and not blocked by a firewall system of the Internet network. Normally there are two possibilities:

1. Your computer is in a big institution, has a **fixed** IP address and it is probably connected by wire to the internet. In that case you must ensure that the ports 8596 and 8597 are open, it can be done by the responsible IT person.
2. You are at home or in a smaller institution and you are behind a modem/router connected by wire or wireless to internet. In this case you must configure “[port forwarding](#)” to your host computer. There is lot of different possibility to configure that, see with your internet provider or your router settings.



**Attention!** Ensure the security of other computers connected to the same network. Do not leave your robots accessible for a long period of time, do not let these ports open when not needed.

